



Rotherhithe Street, London, SE16 5XS

Guide Price £350,000 to £375,000. A generous one bedroom riverside apartment with private balcony in the ever-so-popular grade II listed Globe Wharf in Rotherhithe.

Featuring high ceilings and exposed brickworks, the apartment boasts a spacious reception room leading in to a generous south facing balcony, a separate well-kept kitchen, double bedroom with built-in storage and a Juliet balcony, and a stylish bathroom. Additional storage can be found in the hallway.

Onsite benefits include bike parking, concierge, gym, as well as access to a heated swimming pool and sauna.

The building itself is a unique granary warehouse conversion full of character. It underwent a façade refurbishment in 2024. Rotherhithe and Canada Water stations for the overground and Jubilee lines are within easy reach. Co-op grocery store is on your doorstep and the greenery of Stave Hill Ecological Park is just round the corner.

Years on Lease - 99
Annual Service Charge - £3400
Reserve Fund - £1050
Annual Ground Rent - £340
Council Tax Band - D

Council tax and, where applicable, lease information, service charges and ground rent, and size are given as a guide only and should always be checked and confirmed by your Solicitor prior to exchange of contracts.

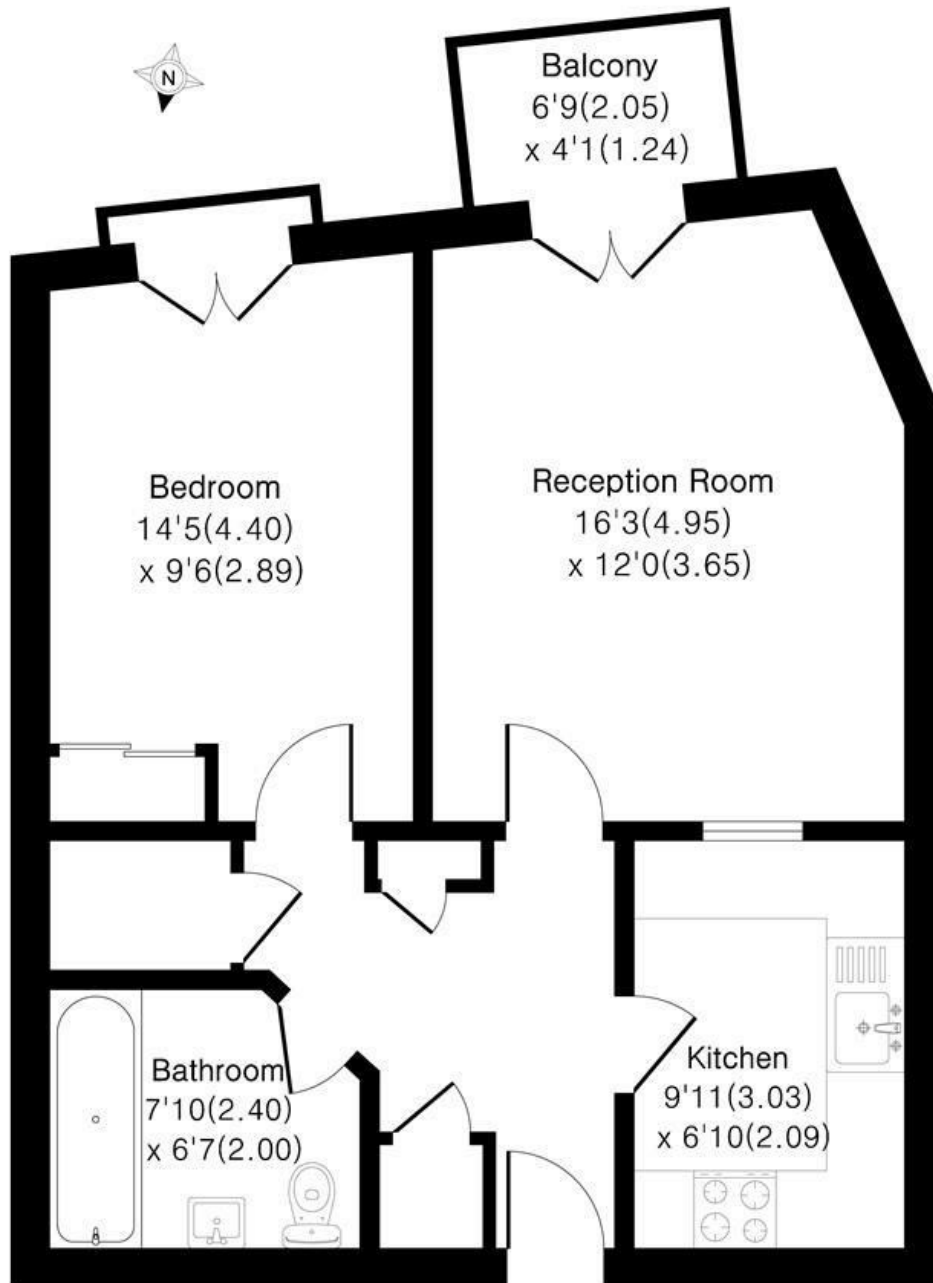
- Spacious One Bedroom Apartment
- Grade II Listed Granary Warehouse Conversion
- High Ceilings
- Onsite Gym, Concierge and Swimming Pool
- Private Balcony
- Good Transport Links
- Plenty of Storage
- Excellent Location
- Riverside Development

Alex & Matteo
ESTATE AGENTS

Guide price £350,000

Globe Wharf SE16

Approximate Area = 545 sq ft / 50.6 sq m



First Floor



Floor plan Produced in accordance with RICS Property Measurement 2nd Edition. Incorporating International Property Measurement Standards (IPMS2 Residential). Produced for Alex & Matteo Estate Agents.

Energy Efficiency Rating		
	Current	Potential
Very energy efficient - lower running costs		
(92 plus) A		
(81-91) B		
(69-80) C	75	80
(55-68) D		
(39-54) E		
(21-38) F		
(1-20) G		
Not energy efficient - higher running costs		
England & Wales <small>EU Directive 2002/91/EC</small>		